

2023

[www.tbilisi.gov.ge](http://www.tbilisi.gov.ge)



# TBILISI

IN FIGURES

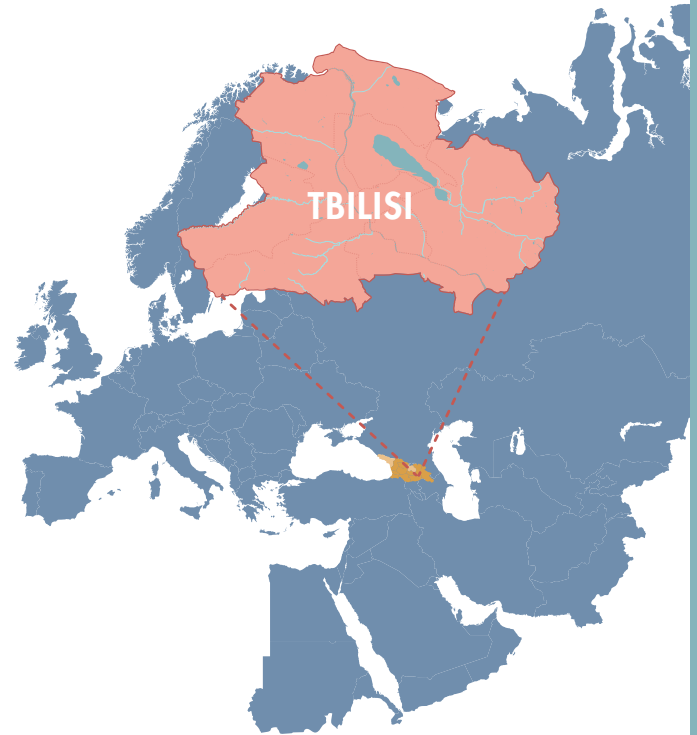
# Economic Development Office

Tbilisy City Hall

## Preface

The annual edition of Tbilisi statistics overview is published by the Economic Development Department of Tbilisi City Hall.

The publication provides general information on city developments and captures main economic trends.





# Contents

---

01. International Rankings	3
02. Tbilisi History	4
03. Urban Area & Climate	5
04. Politics & Urban Administration	7
05. People in Tbilisi	8
06. Living in Tbilisi	11
07. Tourism in Tbilisi	12
08. Culture & Leisure	13
09. Education & Research	14
10. Economy of Tbilisi	15
11. Traffic & Mobility	24
12. Twin & Partner Cities	27

# International Rankings

## ECONOMIC FREEDOM INDEX 2022

18<sup>th</sup> Place in Europe

26<sup>th</sup> Place in the World



## THE GOOD COUNTRY 2021



11<sup>th</sup> Place in Prosperity and Equality

1<sup>st</sup> Place in Major European Cities of the Future

## FDI INTELLIGENCE 2020-2021

Cost Effectiveness



3<sup>rd</sup> Place in Small European Regions of the Future

## EUROPEAN CITY BREAK INDEX 2022

Most Affordable European City Destination

5<sup>th</sup> Place in 50 European Cities



## BEST EUROPEAN DESTINATIONS 2021

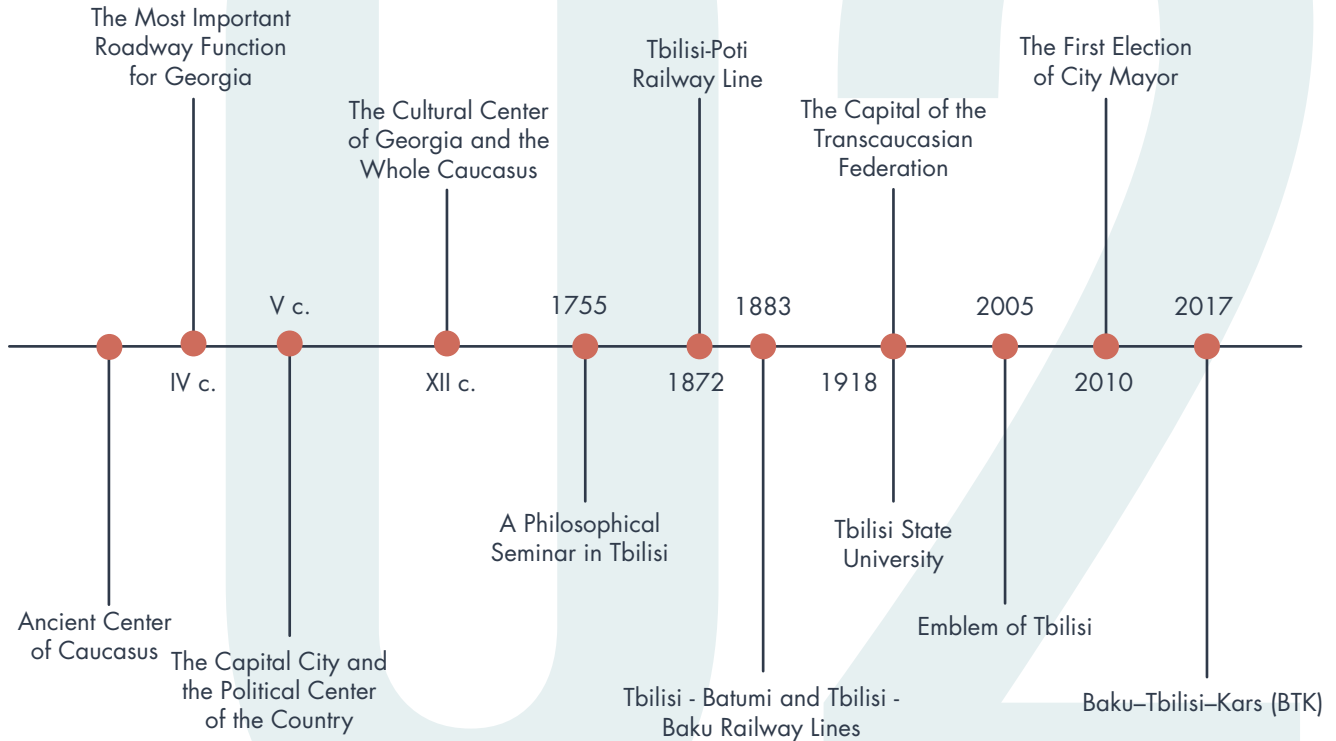
Best Destinations for Vaccinated Travelers

1<sup>st</sup> Place in Europe



# Tbilisi History

## 16 CENTURIES OF HISTORY



# Urban Area & Climate

## LAND USE

City area: **504** km<sup>2</sup>  
 Perimeter: **171.7** km  
 Build-up area: **165** km<sup>2</sup>  
 Green space: **145.5** km<sup>2</sup>  
 Density: **2 383** per km<sup>2</sup>



## BUILDINGS



Tallest building: the mast of Tbilisi **274.5** m  
 Lowest point: underground station Rustaveli **60** m  
 The highest elevation: **1 495** m  
 The lowest elevation: **370** m

## ROADS & RIVERS

Total length of roads: **3 323** km  
 Total space of roads: **184 393** m<sup>2</sup>  
 Total length of rivers: **86 930** m  
 Total area of rivers: **4 442 831** m<sup>2</sup>



## DISTRICTS



District	km <sup>2</sup>
Didube	<b>8.4</b>
Chugureti	<b>14.3</b>
Isani	<b>16.7</b>
Krtsanisi	<b>31.7</b>
Nadzaladevi	<b>42</b>
Gldani	<b>50.3</b>
Vake	<b>61.7</b>
Mtatsminda	<b>73</b>
Saburtalo	<b>75.5</b>
Samgori	<b>128.4</b>

## COORDINATES:

41°43'0''N; 44°47'0''E; 41.71667°N; 44.78333°E

# Urban Area & Climate



## CLIMATE & LOCATION

**Average annual temperature:**  
12.7 °C

**Average monthly temperature:**  
January 0.9 °C  
July 24.4 °C

**Average annual precipitation:**  
560 mm

**Absolute min** -23 °C

**Absolute max** 40 °C

Month	Air °C	Precipitation in mm	Sunshine hours	Relative Air moisturing
January	0.9	16	96	73
February	2.5	22	100	69
March	7.2	31	150	66
April	13.4	52	180	62
May	18	86	250	64
June	21.9	72	269	60
July	25.2	48	271	56
August	24.1	37	267	57
September	20	42	203	64
October	15	42	161	73
November	8	35	94	77
December	3.1	22	42	76

# Politics & Urban Administration

Tbilisi is a self-governing city. Self-governance is exercised by a representative branch – Tbilisi City Assembly and an executive branch – Tbilisi City Hall.

The City Assembly is composed of 50 members from which 10 members are elected according to local single-mandate majoritarian constituencies and 40 members proportionally in the entire territory of Tbilisi, according to 10 electoral districts.

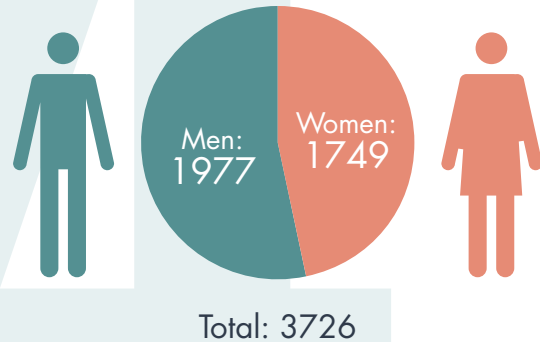
The term of the City Assembly as well as for Mayor’s Office is 4 years. The last election was held in October 2021 in which the Mayor of Tbilisi was directly elected by the citizens of Tbilisi.

The Mayor is the highest-ranking official and the head of Tbilisi Government.

The government is made up of the Mayor, deputy mayors, heads of City Departments and governors of Tbilisi Administrative districts.

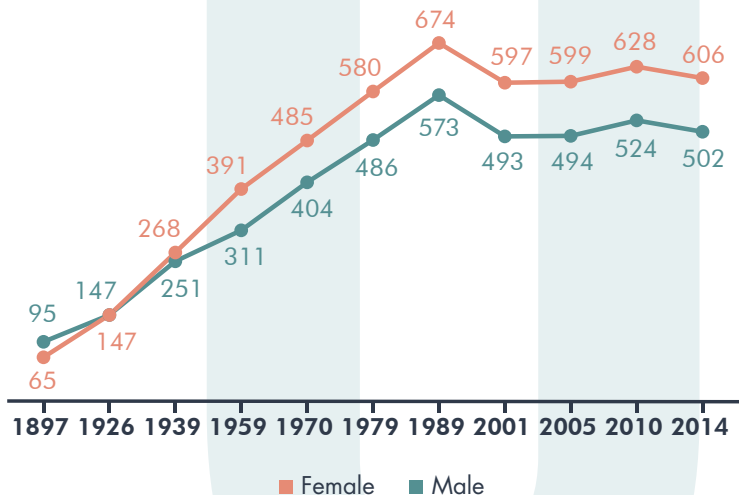
Kakha Kaladze is the Mayor of Tbilisi for the second term.

## CITY ADMINISTRATION 2022

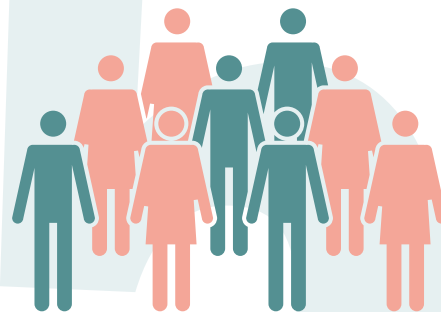


### AGE STRUCTURE

Number and gender balance of Tbilisi population (thousand)



## People in Tbilisi



### POPULATION 2022

Total	<b>1 241.7 mln</b>
Women	<b>55%</b>
Men	<b>45%</b>

# People in Tbilisi

## LIFE EXPECTANCY

General: **72** y  
Women: **76.1** y  
Men: **67.7** y



## VITAL STATISTICS 2022

Births **14 202**  
Deaths **14 123**  
**+79**

## MARRIAGE & DIVORCE

Marriage 2022: **7 916**  
Divorce 2022: **4 934**



Median age at first marriage: **31.6** y

## MULTIPLE BIRTHS

Multiple births 2022: **747**  
Multiple births share in total births: **5.5%**





# People in Tbilisi

**SHARE OF TBILISI POPULATION  
IN GEORGIA 30%**

**CITIZENSHIP:**

**99%** Georgian, **1%** other

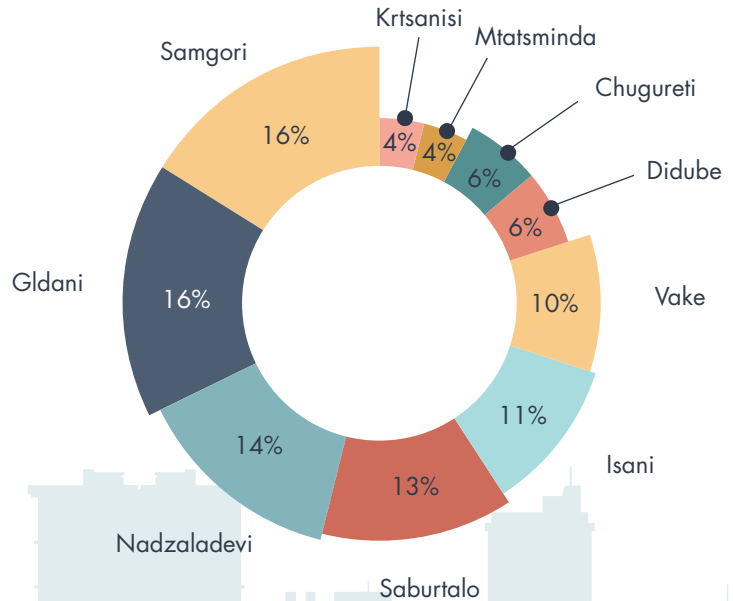
**NATIONALITIES IN TBILISI**

Azerbaijani, Armenian, Russian,  
Ossetian, Yezidi, Ukrainian, Kist,  
Greek, Assyrian and Others

**AVERAGE AGE OF POPULATION:**

**36.3** y

**POPULATION IN DISTRICTS**



# Living in Tbilisi

## ECONOMIC ACTIVITY 2022

Labor force: **490.3 th**

Activity rate: **53.5%**

Unemployment rate: **19.5%**

Employed: **394.7 th**

Unemployed: **95.6 th**

Outside labor force: **426.2**

Labor force 15-24 y: **41.1 th**

Employed: **25.6 th**

Average monthly earnings  
of employed: **528 USD**

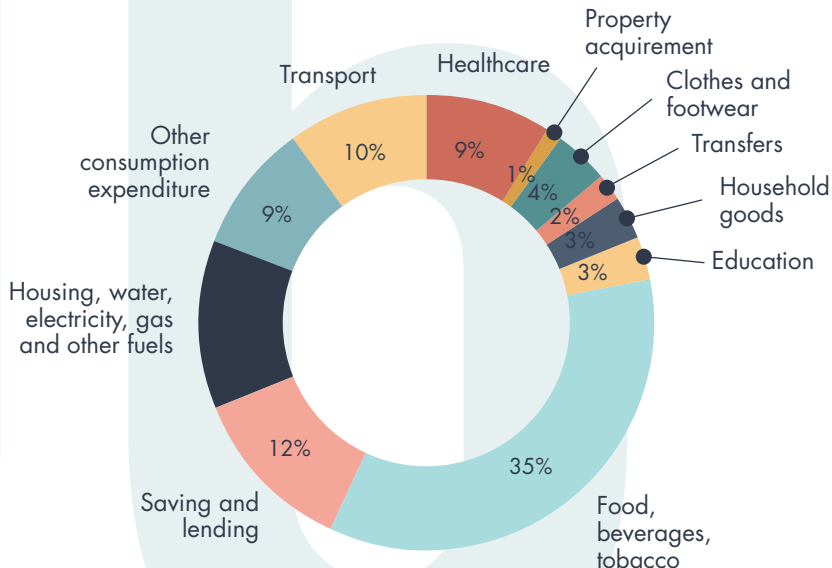
**GINI INDEX BY REVENUES: 0.34**

## CONSUMPTION BY POPULATION 2022:

Internet usage: **88.1%**

Mobile usage: **96.8%**

## AVERAGE MONTHLY EXPENDITURES PER CAPITA 2022



# Tourism in Tbilisi

## VISITORS BY PURPOSE OF ARRIVALS 2022

Holiday, leisure and recreation: **1 143 635 (54%)**  
 Business trip: **375 831 (18%)**  
 Medical care: **22 240 (1%)**  
 Other: **577 708 (27%)**

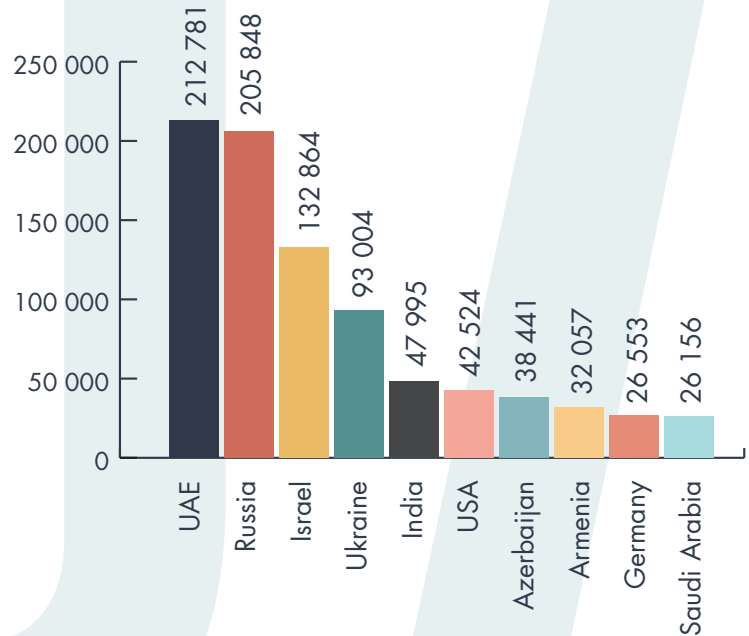
## SOME STATISTICS OF HOTELS 2022

Hotels: **562**  
 Beds: **28 042**  
 Rooms: **13 638**  
 Guests (th): **2 119.4**  
 Employed: **8 385**

## GUESTS IN TBILISI 2022 (th):

Total: **3 163.3**  
 Foreigners: **2 629.1**

## GUEST OF TBILISI BY COUNTRY OF ORIGIN 2022 (TOP 10)



# Culture & Leisure

**MUSEUMS: 58**

Visitors: **539 977**

Exhibitions: **229**

Excursions: **8 435**



**CINEMAS: 6**

Screen: **36**

Seats: **4 694**

Film premiers: **250**

**THEATRES: 27**

Attendance: **354 523**

Performance: **2 417**



**ZOO:**

Visitors: **243 556**

**CITY-RUN PLAYGROUNDS:**

Sports grounds: **756**

Gym: **11**

Open air gym equipment: **346**

Parks and squares: **1 130**





### CHILDREN IN OFFICIAL CHILDCARE FACILITIES 2022/2023

Children: total **55 886**



### SECONDARY EDUCATION IN TBILISI 2022/2023 (MES)

Pupils: total **223 203**

**+3 989 from  
2021/2022**



### HIGHER EDUCATION IN TBILISI 2022/2023

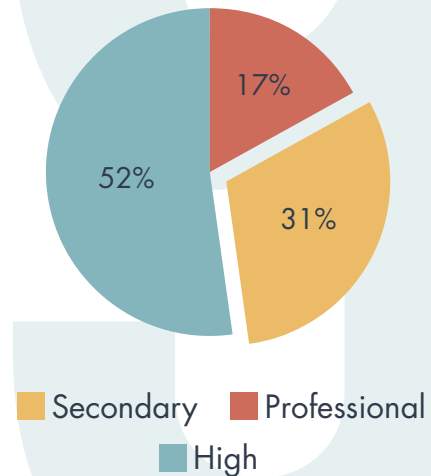
Universities: **40**

Students: total: **121 198**

**+1 836 from  
2021/2022**

## Education & Research

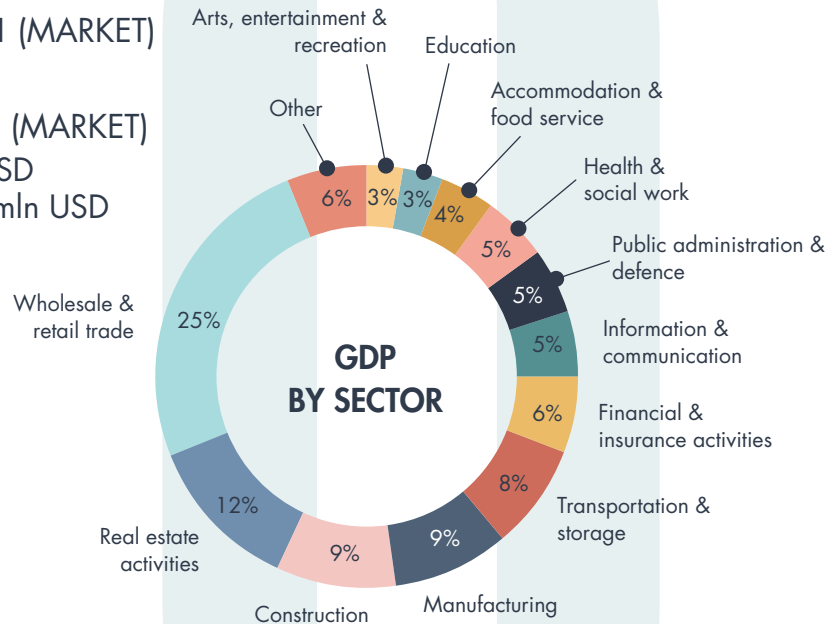
### EDUCATION LEVEL OF THE POPULATION



# Economy of Tbilisi

**GDP PER CAPITA 2021 (MARKET)**  
**7 769 USD**

**SHARE OF GDP 2021 (MARKET)**  
TBILISI **9 344.1** mln USD  
GEORGIA **18 629.3** mln USD



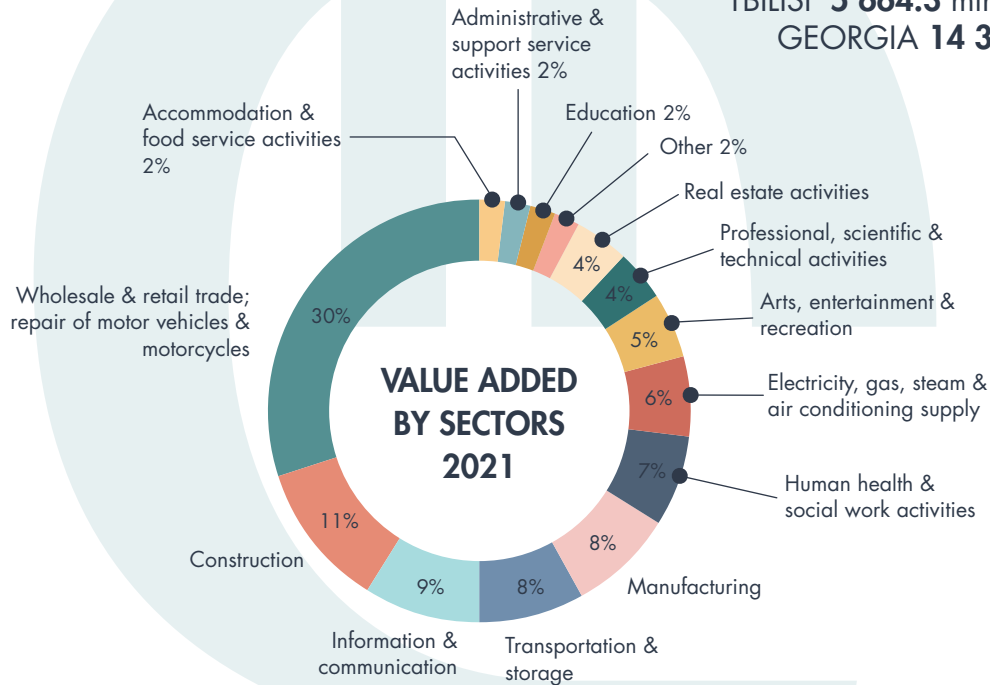
**AVERAGE EXCHANGE RATE 2022: USD – 2.9156; EUR – 3.0791**  
**ANNUAL INFLATION RATE: 11.9% (DEC.2022)**

# Economy of Tbilisi

## SHARE OF VALUE ADDED 2021

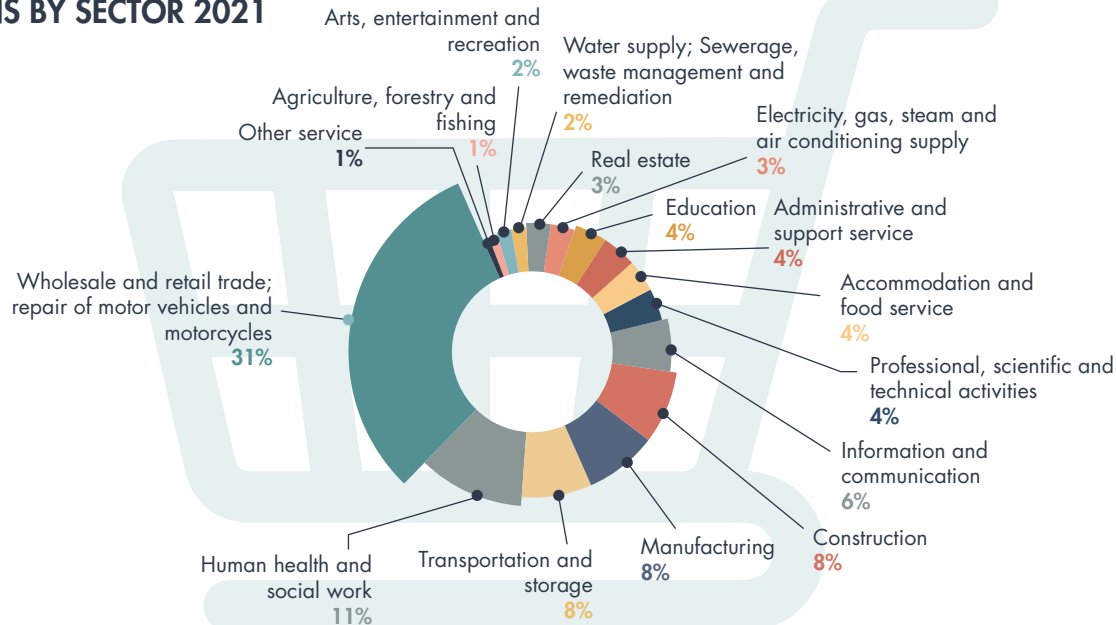
TBILISI **5 664.3** mln USD (40%)

GEORGIA **14 309** mln USD



# Economy of Tbilisi

## NUMBER OF EMPLOYED PERSONS BY SECTOR 2021



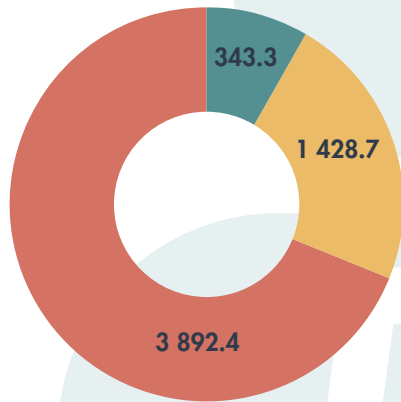
**THE HIGHEST SALARY 2021:** Mining and Quarrying – 1 145 USD

17 **THE LOWEST SALARY:** Administrative and support service activities – 298 USD



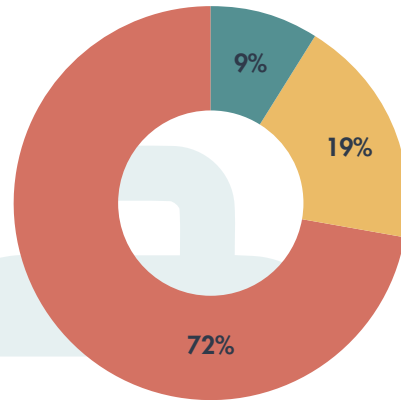
# Economy of Tbilisi

VALUE ADDED BY OWNERSHIP  
2021 USD



- Local Enterprise
- Foreign Enterprise
- State

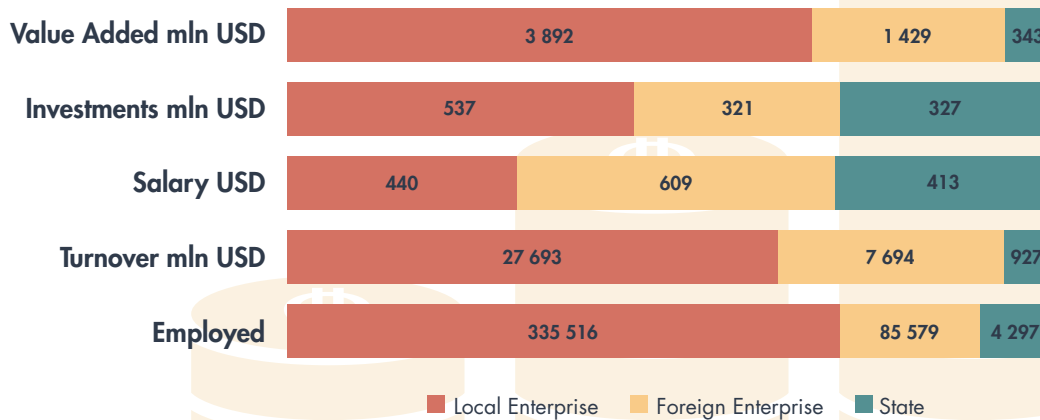
EMPLOYED PERSONS BY OWNERSHIP  
2021



- Local Enterprise
- Foreign Enterprise
- State

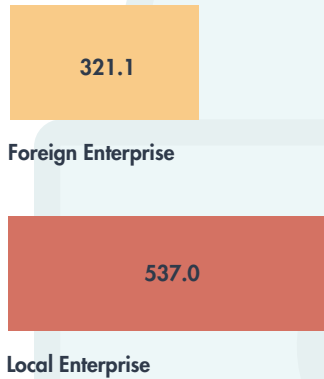
# Economy of Tbilisi

ENTERPRISE DATA BY TYPE OF OWNERSHIP 2021

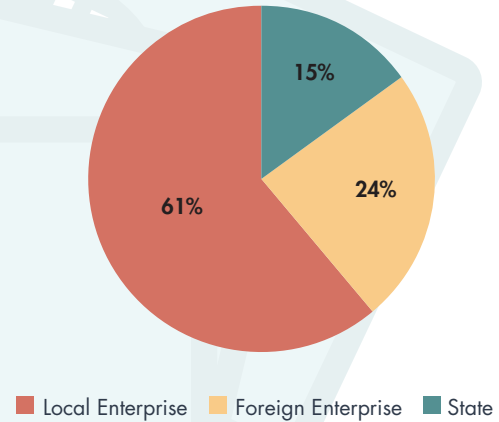


# Economy of Tbilisi

## INVESTMENT IN FIXED ASSETS 2021 (MLN USD)



## INVESTMENTS IN FIXED ASSETS BY ENTERPRISE SIZE 2021

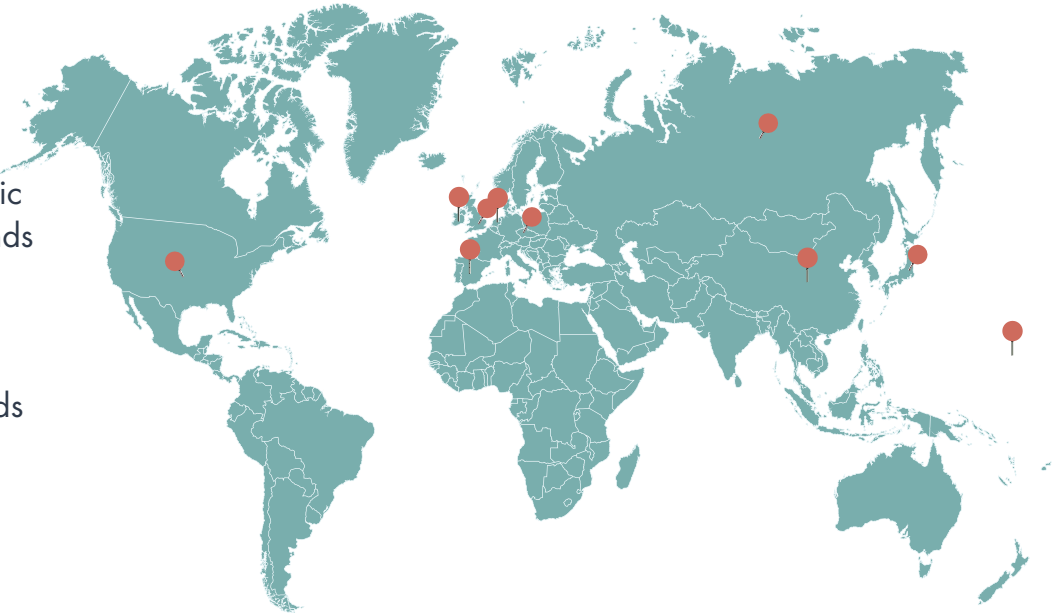


# Economy of Tbilisi

---

**FDI – 58.744 (MLN USD 2022)**  
**TOP 10 INVESTOR COUNTRIES 2022**

- UK
- Spain
- USA
- Ireland
- Czech Republic
- The Netherlands
- China
- Japan
- Russia
- Marshal Islands



# Economy of Tbilisi

## NUMBER OF REGISTERED BUSINESSES 2022

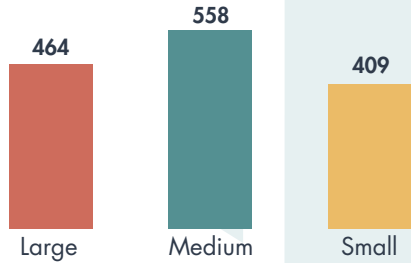
Total	<b>100 721</b>
Private Local Ownership	<b>85 115</b>
Private Foreign Ownership	<b>12 843</b>
State	<b>548</b>
Other	<b>2 215</b>

## NUMBER OF BUSINESSES TOTALLY OR PARTLY OWNED BY FOREIGNERS 2022: 13084

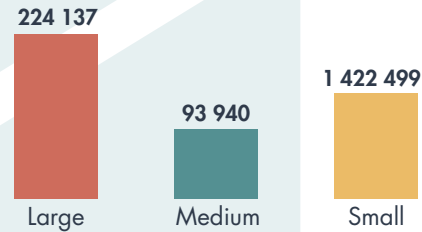
Russia	<b>570</b>
Azerbaijan	<b>205</b>
Iran	<b>201</b>
Israel	<b>323</b>
Ukraine	<b>171</b>
Turkey	<b>165</b>
India	<b>164</b>
Belarus	<b>128</b>
Germany	<b>93</b>
Egypt	<b>76</b>
USA	<b>74</b>

# Economy of Tbilisi

**AVERAGE MONTHLY SALARY  
BY SIZE OF ENTERPRISE 2021 (USD)**



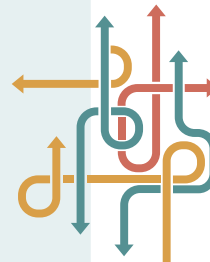
**NUMBER OF EMPLOYED PERSONS BY  
ENTERPRISE SIZE 2021**



# Traffic & Mobility

## PUBLIC TRANSPORT 2022

	Passengers	Network km	Number of lines
<b>UNDERGROUND</b>	<b>127 838 966</b>	<b>57.18</b>	<b>2</b>
<b>BUSES</b>	<b>140 214 460</b>	<b>2 739</b>	<b>129</b>
<b>ROPEWAY</b>	<b>1 638 430</b>	<b>1 982</b>	<b>3</b>



# Traffic & Mobility

---

## PRIVATE TRAFFIC 2022

Total registered cars: **325 074**

Petrol: **175 384**

Hybrid: **13 069**

Electric car: **1 340**

Diesel: **56 217**

Gas: **227**

Other: **78 791**





# Traffic & Mobility

---

## TBILISI INTERNATIONAL AIRPORT

Tbilisi	Airline Number	Passenger Flight	Cargo Flight	Other Flights	Arrival Passenger	Departure Passenger
2022	43	11 702	739	2 275	1 482 559	1 516 007



# Twin & Partner cities

**Twin 1975**  
SAARBRUECKEN



[www.saarbruecken.de](http://www.saarbruecken.de)

**Twin 1977**  
LJUBLJANA



[www.ljubljana.si](http://www.ljubljana.si)

**Twin 1979**  
NANTES



[www.nantes.fr](http://www.nantes.fr)

**Twin 1982**  
INNSBRUCK



[www.innsbruck.at](http://www.innsbruck.at)

**Twin 1987**  
PALERMO



[www.comune.palermo.it](http://www.comune.palermo.it)

**Twin 1987**  
ATLANTA



[www.atlantaga.gov](http://www.atlantaga.gov)

**Twin 1988**  
BRISTOL



[www.bristol.gov.uk](http://www.bristol.gov.uk)

**Twin 1989**  
BILBAO



[www.bilbao.net](http://www.bilbao.net)

**Partner 1994**  
MINSK



[www.minsk.gov.by](http://www.minsk.gov.by)

**Twin 1996**  
YEREVAN



[www.yerevan-city.am](http://www.yerevan-city.am)

**Partner 1996**  
ODESSA



[www.odessa.ua](http://www.odessa.ua)

**Partner 1996**  
ANKARA



[www.ankara.bel.tr](http://www.ankara.bel.tr)

**Partner 1997**  
BAKU



[www.bakucity.az](http://www.bakucity.az)

**Partner 1997**  
ATHENS



[www.cityofathens.gr](http://www.cityofathens.gr)

**Partner 1997**  
PARIS



[www.paris.fr](http://www.paris.fr)

**Partner 1998**  
JERUSALEM



[www.jerusalem.muni.il](http://www.jerusalem.muni.il)

**Twin 1999**  
KYIV



[www.kmv.gov.ua](http://www.kmv.gov.ua)

**Twin 2005**  
ASTANA



[www.astana.kz](http://www.astana.kz)

**Partner 2006/Twin 2016**  
ISTANBUL



[www.istanbul.gov.tr](http://www.istanbul.gov.tr)

**Partner 2007**  
RIGA



[www.riga.lv](http://www.riga.lv)

**Twin 2009**  
VILNIUS



[www.vilnius.it](http://www.vilnius.it)

**Partner 2009**  
KRAKOW



[www.krakow.pl](http://www.krakow.pl)

**Partner 2010**  
WARSAW



[www.e-warsaw.pl](http://www.e-warsaw.pl)

**Twin 2011**  
CHISINAU



[www.Chisinau.md](http://www.Chisinau.md)

**Partner 2011**  
BUDAPEST



[www.budapest.hu](http://www.budapest.hu)

**Twin 2012**  
CAIRO



[www.cairo.gov.eg](http://www.cairo.gov.eg)

**Twin 2012**  
DOHA



[www.baladiyay.qa](http://www.baladiyay.qa)

**Partner 2012**  
KHARKIV



[www.city.kharkov.ua](http://www.city.kharkov.ua)

**Partner 2013**  
LVIV



[city-adm.lviv.ua](http://city-adm.lviv.ua)

**Partner 2013**  
LINCOLN



[www.lincoln.ne.gov](http://www.lincoln.ne.gov)

**Partner 2014**  
GUANGZHOU



[www.eguangzhou.gov.cn](http://www.eguangzhou.gov.cn)

**Partner 2014**  
LUBLIN



[www.lublin.eu](http://www.lublin.eu)

**Partner 2014**  
DUBLIN



[www.dublincity.ie](http://www.dublincity.ie)

**Twin 2015**  
TEHRAN



[www.tehran.ir](http://www.tehran.ir)

**Twin 2016**  
SOFIA



[www.sofia.bg](http://www.sofia.bg)

**Twin 2018**  
LIMA



[www.munlima.gob.pe](http://www.munlima.gob.pe)

**Twin 2022**  
BUCHAREST



[www.pmb.ro](http://www.pmb.ro)

# Sources

---

<a href="http://www.tbilisi.gov.ge">www.tbilisi.gov.ge</a>	—————	Tbilisi Municipality City Hall
<a href="http://www.meteo.gov.ge">www.meteo.gov.ge</a>	—————	The National Environmental Agency
<a href="http://www.geostat.ge">www.geostat.ge</a>	—————	Georgian National Statistics Agency
<a href="http://www.ftc.com.ge">www.ftc.com.ge</a>	—————	Tbilisi Transport Company
<a href="http://www.tbilisiairport.com">www.tbilisiairport.com</a>	—————	Tbilisi Airport
<a href="http://www.napr.gov.ge">www.napr.gov.ge</a>	—————	National Agency of Public Registry
<a href="http://www.police.ge">www.police.ge</a>	—————	Ministry of Internal Affairs
<a href="http://www.kids.org.ge">www.kids.org.ge</a>	—————	Kindergarten Management Agency
<a href="http://www.zoo.ge">www.zoo.ge</a>	—————	Tbilisi Zoo
<a href="http://www.cavea.ge">www.cavea.ge</a>	—————	Cavea Cinemas
<a href="http://www.census.ge">www.census.ge</a>	—————	2014 General Population Census
<a href="http://www.heritage.org">www.heritage.org</a>	—————	Index of Economic Freedom
<a href="http://www.goodcountry.org">www.goodcountry.org</a>	—————	The Good Country Index
<a href="http://www.msda.ge">www.msda.ge</a>	—————	Municipal Services Development Agency

